

LYTE

LADDERS | TOWERS



Repair Guide

Contents

Replacing Ladder Feet	Pg3
Replacing A Handrail	Pg4
Repairing Bolted Platform Steps	Pg5
Repairing Bolted Swingback Steps	Pg7
Repairing Extension Ladders	Pg9
Lytepod Repair Guide	Pg10

Replacing Ladder Feet

Extension Ladder Feet



1.Drill Rivets



2.Remove Foot



3.Replace Foot



4.Rivot Foot

Articulated Feet



1.Use a 13mm spanner to unfasten the nut and bolt



2. Take the old foot out of the metal bracket



3. Replace the foot using the nut and bolt, make sure the brass insert is in place



4. Tighten the nut and bolt until secure

Bolted Step Feet



1.Unbolt and remove old foot. Put a new foot in and Drill a M6 through the hole and foot.



2. Insert the bolt through the hole.



3. Thread the nut onto the bolt and secure with a spanner and driver at each side.

Please call 01792 796 666 for assistance

Replacing a Handrail

Tools required :

Spanner

Flathead Screwdriver

Fixings provided :

Handrail,

M6 Nuts & Bolts and Washers



Step 1

Align the handrail squarely to the stile of the ladder.



Step 2

Fit the bolts and washers through all four holes and hand tighten the four M6 nuts to allow the handrail to adjust and align into the correct hole position.



Step 3

Secure the handrail using the correct tools and ensure the bolt and nut are tightened sufficiently.

Step 4

Repeat process on the other side of the ladder.

Please call 01792 796 666 for assistance

Repairing bolted platform steps

Ranges covered:

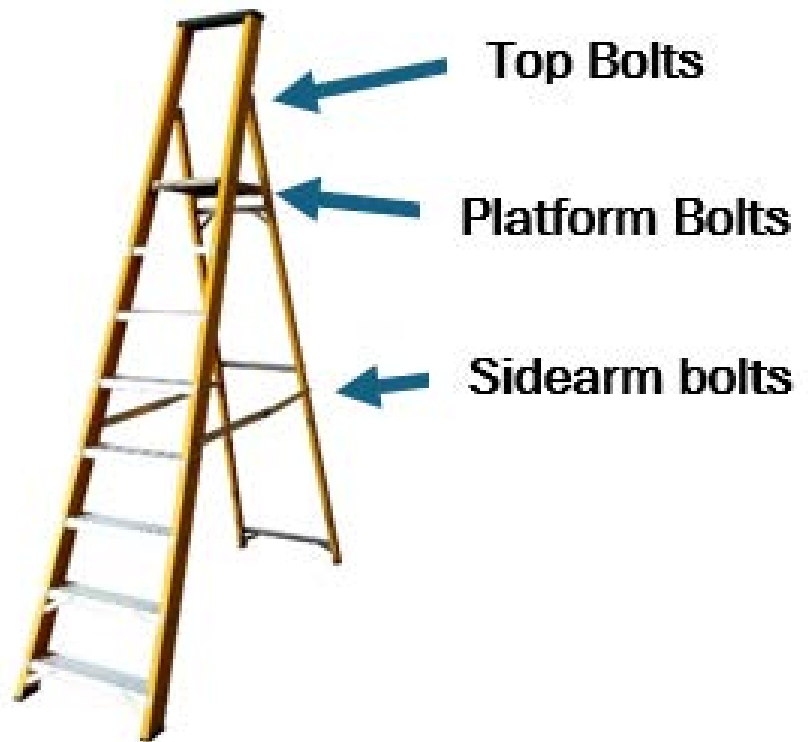
NBSBP, NESP, NGFBP

What you will need:

1x Flathead Screw Driver

2x 10mm Spanners

1x 8mm Spanner



Step 1

Use the screwdriver and 10mm spanner to remove the top bolts.



Step 2

Use the screwdriver and 8mm spanner to remove the bolts on the platform.

Please call **01792 796 666** for assistance



Step 3

Use both 10mm spanners to remove the bolts on the side arms.



Step 4

The sections are now unattached. Please pull them apart.



Step 5

Attach new front or back section with original fixtures and fittings. Use the screwdriver and 10mm spanner to tighten the top bolts.



Step 6

Use the screwdriver and 8mm spanner to fit the bolts on the platform.



Step 7

Use both 10mm spanners to tighten the bolts on the side arms.

Your steps are now repaired and ready to use

Please call 01792 796 666 for assistance

Repairing bolted swingback steps

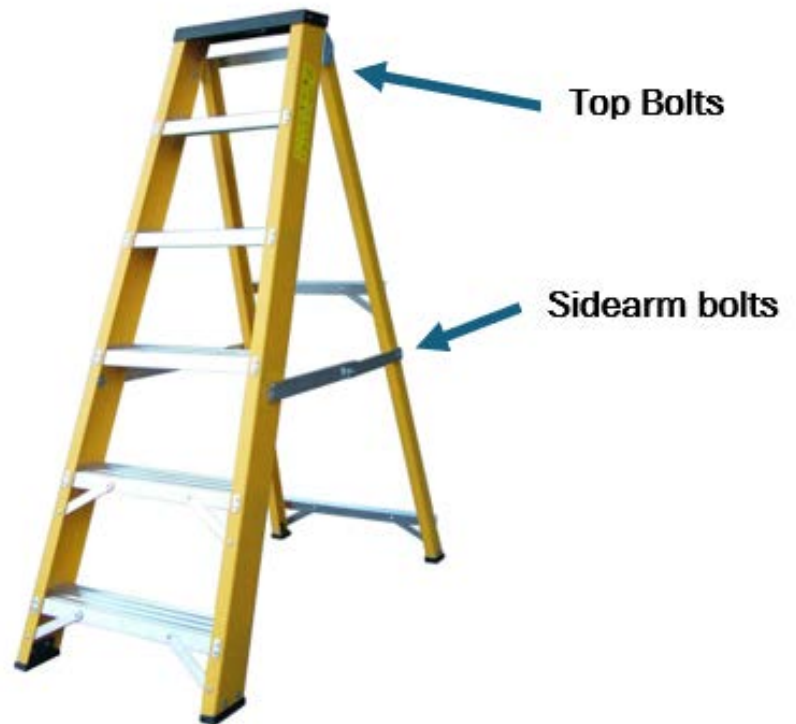
Ranges covered:

NBSBB, NESS, NGFBB

What you will need:

1x Flathead Screw Driver

2x 10mm Spanners



Step 1

Use the screwdriver and 10mm spanner to remove the top bolts.



Step 2

Use both 10mm spanners to remove the bolts on the side arms

Please call **01792 796 666** for assistance



Step 3

The sections are now unattached. Please pull them apart.



Step 4

Attach new front or back section with original fixtures and fittings. Use the screwdriver and 10mm spanner to tighten the top bolts.



Step 5

Use both 10mm spanners to tighten the bolts on the side arms.

Your steps are now repaired and ready to use

Please call 01792 796 666 for assistance

Repairing Extension Ladders

What you will need:

1 X Spanner

1 X flathead screwdriver



Step 1

Release the rung locks on each section of the ladder by lifting the rungs and disengaging the locks.

Step 2

Remove the stopper circled in image two. This can be found at the top of the stile. Unbolt from the stile using a small spanner and flathead screwdriver.

Step 3

Slide the sections apart, starting from the top, until all sections are separated. Lay the sections out in order that the came off to make reassembly as easy as possible

Step 4

Replace damaged section with the new one and reassemble by sliding each section through the brackets and securing the stile stop.



Please note this guide is to replace a section only. We do not advise using one section alone.

Please call 01792 796 666 for assistance

Podium (Lytepod) Repair Guide

Assemble the podium for inspection



Pull the sides apart



Place the pin through rear gate to secure



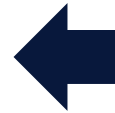
Unclip the deck from the frame



Attach bottom rear brace claw to the other side



Unclip bottom brace claw & fold out



Unclip the ladder frame



Clip the deck onto the side frames.



Attach the ladder frame



Attach and tighten both stabilisers

Please see LytePod assembly guide or video for full detail

Please call **01792 796 666** for assistance

Identifying Damaged Parts

Identify and order damaged part using the codes below



Please call 01792 796 666 for assistance

Changing A Ladder Frame

No tools required



LP10LF
LP12LF
LP15LF

Step 1

Unclip the four red brace claws ensuring that all are unlocked before lifting the ladder off. Remove existing ladder frame from the front of the podium.

Step 2

Attach the new ladder frame to the front of the podium ensuring that all of the brace claws are locked into position.



Please call 01792 796 666 for assistance

Changing The Deck

No tools required



Lytepodeck



Step 1

Remove the damaged platform ensuring that all of the brace claws are unlocked before lifting it off.

Step 2

Attach the new platform to the front of the podium ensuring that all of the brace claws are locked into position.

Please call 01792 796 666 for assistance

Changing A Stabiliser

What you will need:

Monobolt Gun



LP10LST
LP12LST
LP15LST



LP10RST
LP12RST
LP15RST

Step 1

Drill out the monobolt attachment at the insertion point of the stabiliser bar. Ensure the stabiliser is free and lift away.

Step2

Position the new stabiliser bar and thread a monobolt rivet through the hoop of the retaining wire.

Step 3

Rivet into position.

Please call 01792 796 666 for assistance

Changing The Rear Gate

What you will need:

2 x 17mm spanners



Step 1

Line up the gate with the top bracket and put the bolt through to stabilise.

Step 2

Line up the bottom of the gate with the bracket and put the bolt through to stabilise.



Step 3

Fit the nut and tighten using the two spanners.

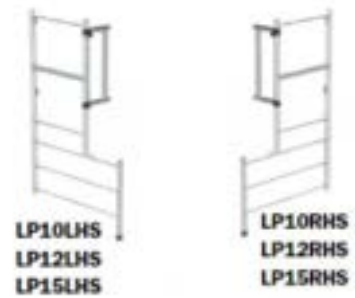
Please call 01792 796 666 for assistance

Changing A Side Frame

What you will need:

Safe working platform or a clear flat surface to lay the frame down.

17mm spanner x2



Step 1

Unbolt the rear gate from the frame using the two spanners.



Step 2

Stow the stabilisers.



Step 3

Unclip and lift away the ladder frame and deck. Continue to separate the two sides.



Step 4

Position new side and re-attach the rear gate using two spanners.

Step 5

Clip the ladder frame and deck back on.

Please note the right side as you look at the podium is supplied with a stabiliser and bottom bar. The left side is supplied with a stabiliser bar.

Please call 01792 796 666 for assistance

Replacing A Foot

What you will need:

Drill
Rivet gun



LPF00T

C1853 - Foot
C1854 - Washer

Step 1

Drill out the Rivet that goes through the foot.

Step 2

Remove the foot

Step 3

Place washer provided inside the new foot and fit to the base of the tube.

Step 4

Locate the hole in the post and drill through the foot.

Step 5

Rivet into position



Please call 01792 796 666 for assistance

Replacing A Cap

What you will need:

1 x Flathead screwdriver



T0043

Step 1

Gently prise the damaged cap out of the tube using a flat head screwdriver or other suitable tool.

Step 2

Position the new cap and push down into place.



Please note the end caps have changed from red to black. These caps fill the top of all tubing.

Please call 01792 796 666 for assistance

Replacing The Strap Set

What you will need:

Flathead screw driver

M6 Spanner



Each strap set consists of:

T0103	X1
F9612	X2
C1069	X1
F9425	X2
F9573	X2

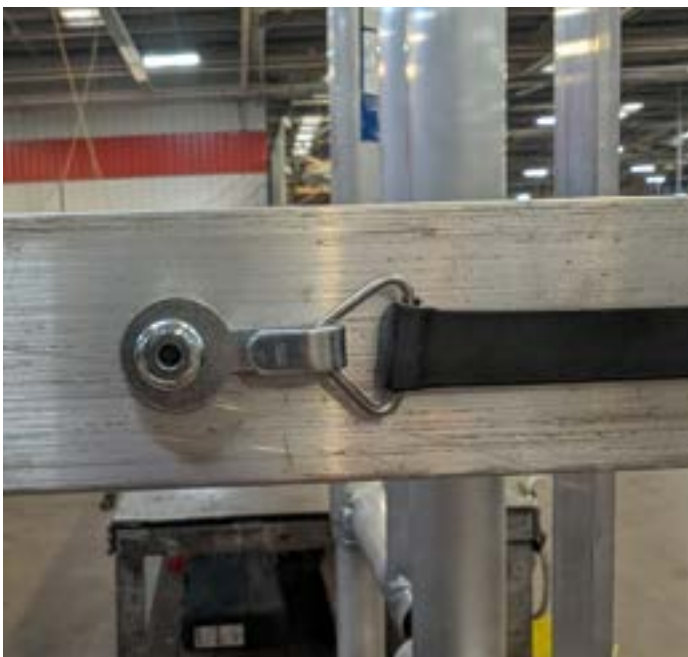


Step 1

unscrew the old strap from the front gate.

Step 2

Unclip the strap from the side frame.



Step 3

Screw New strap into place on the front gate.

Step 4

Clip the other end of the strap onto the side frame.

Please note strap kits come with side clip attachment that can be unscrewed and re fitted if required.

Please call 01792 796 666 for assistance

Replacing A Castor

What you will need:

1 X 19mm Spanner



T0085



Step 1

Remove the damaged castor by undoing the bolt underneath with a 19mm spanner.



Step 2

Put the castor into the aluminium tube and position it as required.



Step 3

Ensure you hold the top plastic collar to prevent turning, then turn the spanner to securely fix the castor to the tube.

Please call 01792 796 666 for assistance

Safety

- Please ensure all repairs are carried out by a competent person.
- Please ensure appropriate PPE is worn whilst carrying out repairs
- Please use the correct tools for the job
- If in doubt please contact Lyte for guidance



Please call 01792 796 666 for assistance